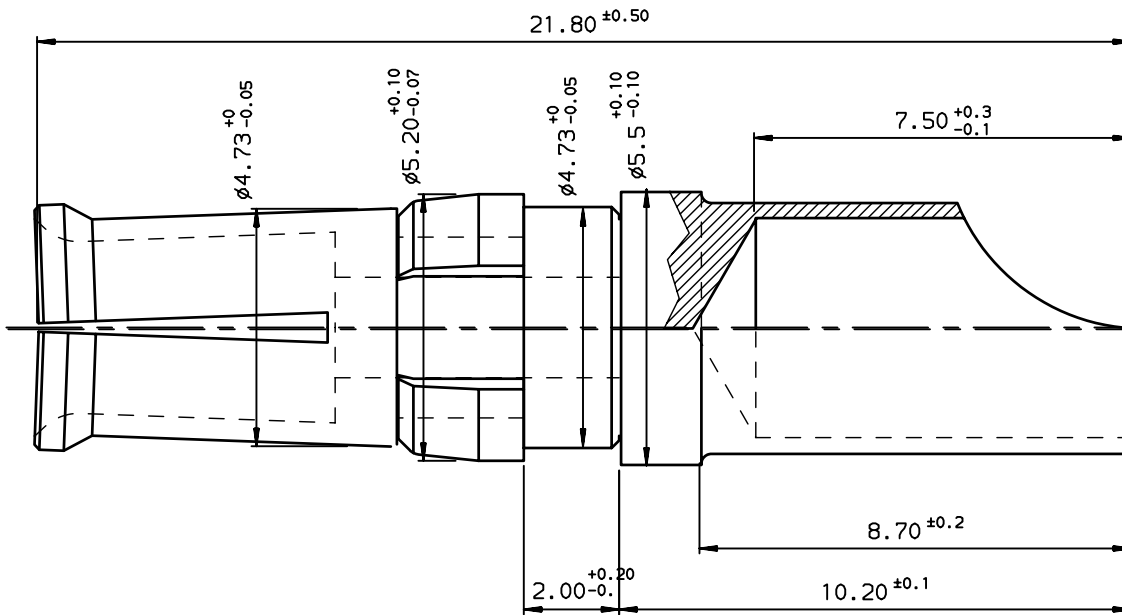


1		2		3		4						
> 500 matings / unmatings	> 500 matings / unmatings	> 200 matings / unmatings	> 500 matings / unmatings	> 500 matings / unmatings	> 200 matings / unmatings							
8638PSS4007	8638PSS4006	--	8638PSS4007LF	8638PSS4006LF	--	40	8					
8638PSS2007	8638PSS2006	--	8638PSS2007LF	8638PSS2006LF	--	20	12					
8638PSS1507	8638PSS1506	8638PSS1505	8638PSS1507LF	8638PSS1506LF	8638PSS1505LF	15	14					
8638PSS1007	8638PSS1006	--	8638PSS1007LF	8638PSS1006LF	--	10	16					
TIN LEAD PART NUMBER	TIN LEAD PART NUMBER	TIN LEAD PART NUMBER	LEAD FREE PART NUMBER	LEAD FREE PART NUMBER	LEAD FREE PART NUMBER	CURRENT max A	AWG	mm ²	WIRE AREA	ØA ^{+0.10} ₋₀	ØB ^{+0.10}	COLOUR CLIP



NOTE:RoHS INFORMATIONS
 - The "LF" products meet European union Directives and other country regulations as described in 65-22-008.
 - Termination plating spec: Cu 2 +0 +2 µm, Sn 3 +0 +3µm (pure matte)
 - Packaging spec: see 65-14-920 contact:CuZn40 Pb3 1µNi+gold

Materials and finish for TIN LEAD

contact: brass
 Solder buckets: brass Cu 2 0+2 + SnPb 3+3µm
 Clip : plastic
Technical characteristics
 Peak voltage: 750Veff.
 Operating voltage: 500Veff.
 Temperature range:-55°C ÷125°C
 Packaging per 100
 Current capability see table

Mechanical characteristics:

Contact insertion force in insulator:
 60N maxi in a hole of 4.80mm
Examination of product:
 Remove all burns and sharp edges 0.08 maxi
 No scratch on all pieces

European Views

www.fciconnect.com		surface ISO 1302 ✓	tolerance std ISO 406 ISO 1101	projection mm
TOLERANCES UNLESS OTHERWISE SPECIFIED				
Dr	JARRY	1994/12/13	0.X	±0.1
Eng	JARRY	1994/12/13	0.XX	±0.1
Chr	LEGARE	1994/12/13	0.XXX	±0.1
Appr	LEGARE	1994/12/13	Product family D-SUB Spec ref -	
FCJ		title FEMALE CONTACT		dwg no C01-8638-0348
		FOR SOLDER CONNECTION		Rev. D
catalog no		CUSTOMER		sheet 1 of 1

rev	ecn no	dr	date
B	LS05-005	LMA	2005/02/09
C	LS06-0097	LGO	2006/07/27
D	LS08-0029	MPE	2008/01/28
-	-	-	-
-	-	-	-
-	-	-	-
-	-	-	-

Copyright FCJ.